

Approximate Requirements:

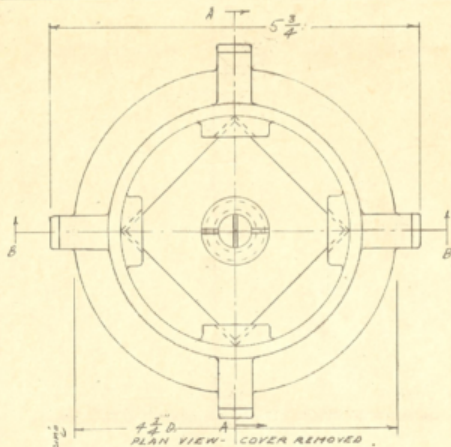
Studio	Floor	Capacity	Spring Color	Wall	Capacity	Spring Color	Spacing
A	1408	335"	Gray	442	550"	Black	10"
B	960	"	Gray	260	"	Black	15"
C	671	"	Gray	208	"	Black	15"
D	584	"	Gray	194	"	Black	15"
E	544	"	Gray	184	"	Black	15"
F	555	"	Gray	96	400"	Red	30"

Totals:

Floor Mounts 4702

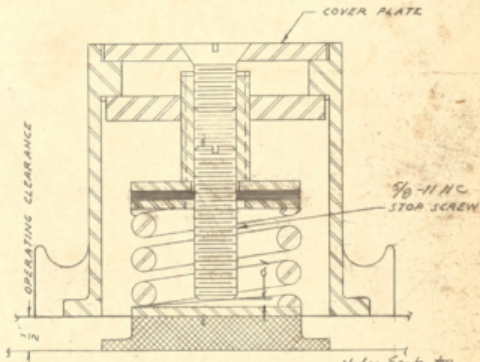
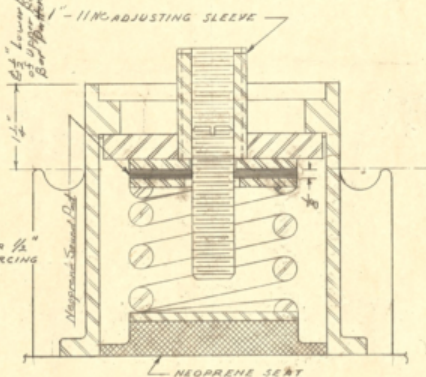
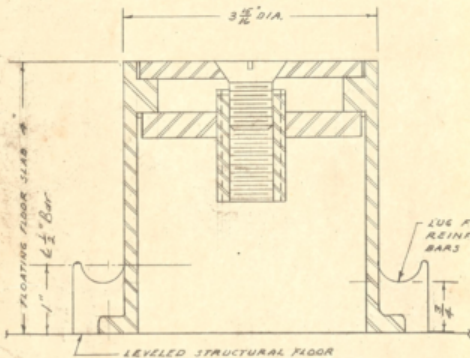
A, B, C, D+E Wall Mounts 1288

F Wall Mounts 96



Notes:

1. Springs are Sand Blasted and Cadmium Plated.
2. Threaded Parts are to be coated with Cosmolene
3. Spring Capacity 335" @ 0.7 Defl. Stress 50,500 psi. - $\frac{1}{1000} = 1.9$. Additional travel 0.1 to screw stop. Pad deflection 0.1 @ 1000". Total Deflection 0.6 @ 1000"



Note: Seat to have 1" D. Hole. Diameter 50

2	11/16	Forward Spring Legs - 1/2"	
1	2/15/68	Add Upper Legs -	State Approximate Requirements
NO.	DATE	REVISION	

DWN BY: AS, CHK BY:
SCALE: FULL
DATE: 1/23/62

SPRING MOUNT
FOR T.V. STUDIO FLOOR
FOR
COLUMBIA BROADCASTING SYSTEM

MASON INDUSTRIES, INC.
180-11 93RD AVE. JAMAICA 33, N.Y.
DRAWING NO. C-1085-2